

SMART SOLUTIONS FOR THE LABELING INDUSTRY

UNWINDER & REWINDER FOR EPSON C4000 LABEL PRINTER



LABEL REWINDER (ASD1111-S0) - Epson C4000 printer - LABEL UNWINDER (ASS1111-S0)
(Not included)

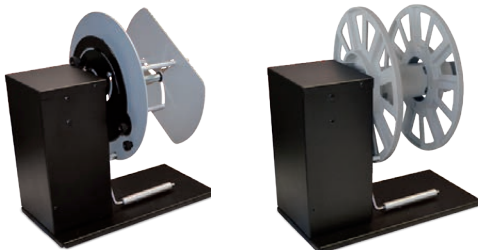
The new Unwinding/Rewinding system for Epson C4000 Label Printer can handle media up to 127mm (5") wide and unwind/rewind label rolls having outside diameter up to 250mm (9.84"). Units are equipped with a 3" or adjustable core holder from 40 to 118mm (1.57" - 4.64").

To guarantee an aligned media path in the system, the printer plate is available to connect the rewinder and unwinder together. It also offers a customized sliding support where lean and fix the Epson printer.

Electronic and mechanical features:

An external power supply 100/240VAC - 2.5A $\overline{\text{~}}$ at 24V allows an electronic circuit to provide, through the tension arm, the automatic adjustment of the rotation direction and speed.

The unwinder / rewinder have two types of speed adjustments, through the two buttons it is possible to set the maximum speed required while the tension arm will auto adjust the speed from zero to the set value. The control panel allows to set the label rewinding face-in or face-out option.



LABEL UNWINDER

The position of the tension arm is calibrated as follows:

- When the printer forwards the media for printing, the tension arm goes up and the device unwinds the media.
- When the tension arm is in the middle position, the device is idle.
- When the printer pulls back the media, the tension arm goes down and the device rewinds it.



LABEL REWINDER

The position of the tension arm is calibrated as follows:

- When the printer forwards the media for printing, the tension arm goes down and the device rewinds the media.
- When the tension arm is in the middle position, the device is idle.
- When the printer pulls back the media, the tension arm goes up and the device unwinds it.

LABEL UNWINDER

ASS1111-S0	40-118mm adjustable core holder
ASS1114-S0	3" fixed core holder

LABEL REWINDER

ASD1111-S0	40-118mm adjustable core holder
ASD1114-S0	3" fixed core holder



PRINTER PLATE

EPS40-JPL	UW-RW printer plate
-----------	---------------------